



DWS Community Meeting

Re-Aligning for Our Future 2021-2022

9 August 2021



The Healthy Social Life Verse



A healthy social life is found only when, in the mirror of each soul, the whole community finds its reflection, and when, in the whole community, the virtue of each one is living.

-Rudolf Steiner



Agenda

- Agenda
- Introduction
- Looking Back/Looking Forward
- COVID safety measures for the 2021-2022 school year
- Symptoms and exclusions
- Smoke Policy



Year In Review

2020-2021 School year

- Several Community Meetings
- Community and Employee Surveys
- Changing guidelines
- Uncertainty with waiver process
- Focus on redevelopment of site





This year

2021-2022 School year

- Feedback over the year from community
- Concrete guidelines from CDPH
- More understanding of COVID
- Use of newly developed infrastructure and supplies
- Focus on flexibility and sustainability





Our Approach

Time spent Indoors and Outdoors

- Face coverings will be worn indoors at all times
- 3-4 HEPA UVC air purifiers per room

- 25-50% of day outdoors
- Opportunity for unmasked learning
- Eating outdoors unless poor AQI or inclement weather

Flexibility to modify as needed



Face Coverings



- We will require all students and staff members to wear masks indoors.
- Masks are optional for students when outdoors.
- Outside staff members will wear masks when working closely (3 feet or less) with an individual student for a sustained period (longer than 5 minutes).



Eating and Meals

HOT LUNCH

- Eating will occur outdoors as much as feasible.
- In inclement weather or when the AQI is high, eating indoors physically distanced
- Masks and gloves are required while serving or preparing hot lunch.

CLASS ACTIVITIES INVOLVING FOOD

- Students may participate in cooking activities with their class.
- Masks will be worn when preparing food whether inside or outdoors.
- Students will be guided to wash their hands prior to food preparation or eating.
- Adults will be required to wear gloves while preparing food.



Aftercare

EARLY CHILDHOOD JUNE BUG

- We will have separate preschool and kindergarten napping rooms.
- when laying down in their nap areas the children will not wear face coverings.
- Face coverings will be used indoors at all other times.
- In the late afternoon the preschool and kindergarten program will combine.
- Will spend most of their time outdoors, but may go inside when the weather is cold, very rainy, dark, or when the AQI is poor.

SUNFLOWER

- Our 1st - 4th grades aftercare program will also spend most of their time outdoors.
- They may go inside when the weather is cold, very rainy, dark, or when the AQI is poor.
- They will utilize the same indoor space, the aftercare room, as needed.
- Face coverings will be worn at all times when indoors.



Vaccination and Testing

In line with CDC guidance, we support and encourage our employees to vaccinate to prevent the spread of COVID-19.

While testing is encouraged for all employees, we are requiring all unvaccinated employees to undergo testing weekly.



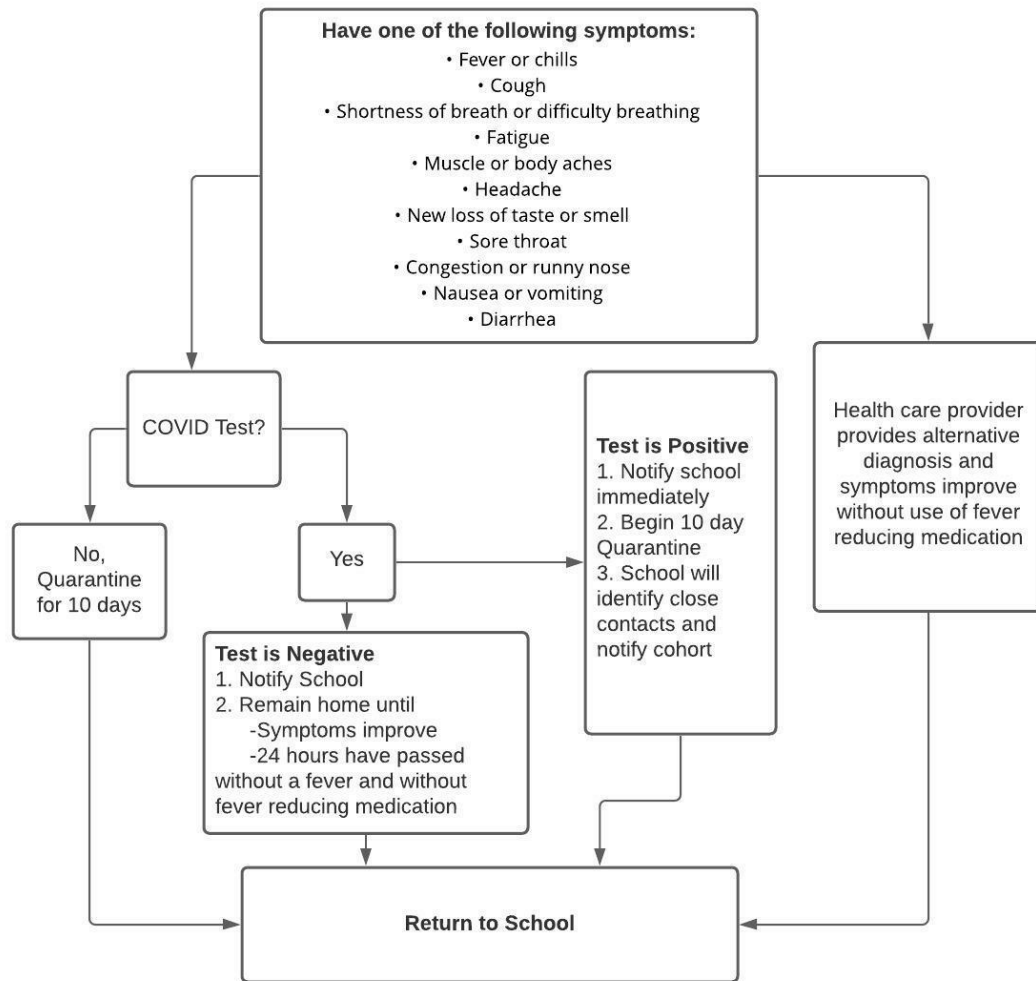


Screening at home

Stay home if they have any of the following symptoms:



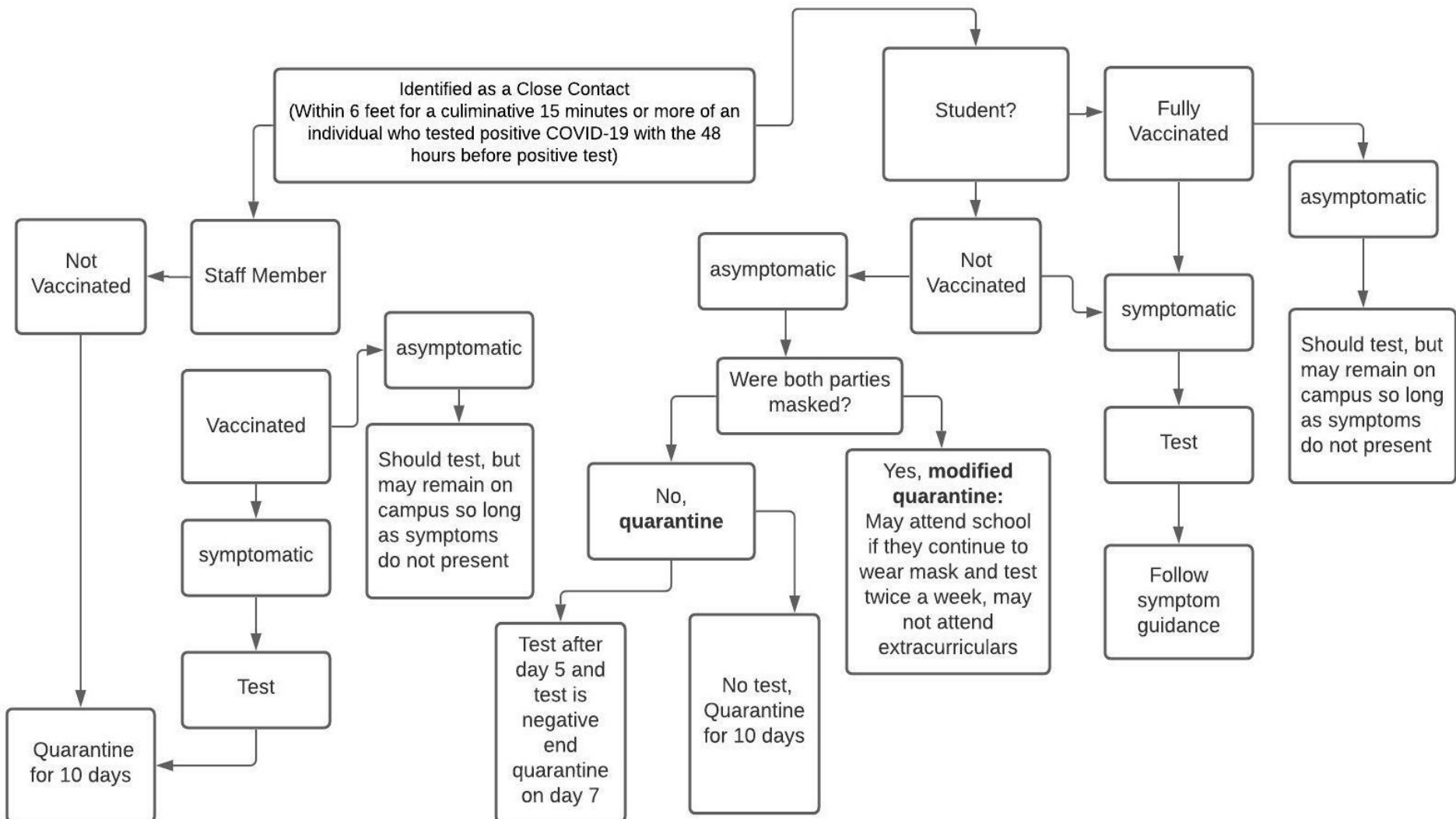
- Fever or chills
- Cough
- Shortness of breath or difficulty breathing
- Fatigue
- Muscle or body aches
- Headache
- New loss of taste or smell
- Sore throat
- Congestion or runny nose
- Nausea or vomiting
- Diarrhea





Close Contact Guidance

- The California Department of Public Health no longer considers all students in a class to be a close contact.
- The DWS will continue to notify the entire class community in the event of a close contact or a positive case in the class cohort.
- Unvaccinated siblings will be considered a close contact when their sibling has symptoms until school receives a negative test for the student with symptoms
- A close contact is defined as someone who was within 6 feet of an infected person for a cumulative total of 15 minutes or more over a 24-hour period.





Travel

We highly encourage testing after all travel, including domestic travel.

AFTER INTERNATIONAL TRAVEL

- Quarantine at home for 7 days after return
- Students may return to school after day 7 along with a negative test that was performed on or after the 5th day following their date of return.





Festivals, Guests, Volunteering and Drop off

Festivals	Guests	Volunteering	Drop off & Pick up	Parent meetings
Guidance will be determined depending on the festival	Face coverings required	Face coverings required inside & outside, exception on walk away from class.	Face coverings required	Face coverings not required for outdoor parent meetings



Smoke Policy

Historic Information

YEAR	Days between 100-125	Days between 125-150	Days between 150-175	Days between 175-200	Days above 200
2020	12	8	5	3	
2019		1			
2018	1	5	1	2	2
2017	3	1			

Data taken from <https://aqicn.org/city/california/yolo/davis-ucd-campus/>



Smoke Policy

AQI	Grades	Early Childhood
Days between 100-125	<ul style="list-style-type: none">• Students will be outdoors for recess, lunch and up to 3 periods taught outdoors	<ul style="list-style-type: none">• Students will be outside for less than 2 hours
Days between 125-150	<ul style="list-style-type: none">• Students will be outdoors for recess, lunch and up to 2 periods taught outdoors• May have snack and lunch indoors	<ul style="list-style-type: none">• Students will be outside for less than 1 hour• Snack and Lunch will be indoors
Days between 150-175	<ul style="list-style-type: none">• Students will be outdoors for recess and up to 1 period taught outdoors• Snack and Lunch will be indoors	<ul style="list-style-type: none">• Students will be outside for half an hour or less• Snack and Lunch will be indoors
Days between 175-200	<ul style="list-style-type: none">• Students will be outdoors for a shortened recess• Snack and Lunch will be indoors	<ul style="list-style-type: none">• Students will remain indoors• Snack and Lunch will be indoors
Days above 200	<ul style="list-style-type: none">• School will be canceled	<ul style="list-style-type: none">• School will be canceled



Other Campus News

- Berber Kaiser will be joining us as our 5th grade teacher
- Arne Kaiser will be joining us as our 6th grade teacher
- Dahlia will have a handwork room this fall
- Golden Poppy bathroom is being remodeled for better sight lines
- Launching the outdoor preschool, Buttercup, lead by Jennifer Mason



Goodbye and Thank you



“We shoulder an enormous responsibility and should work together to model community responsibility for the children without fear and in grace”

- inspired by WECAN statement